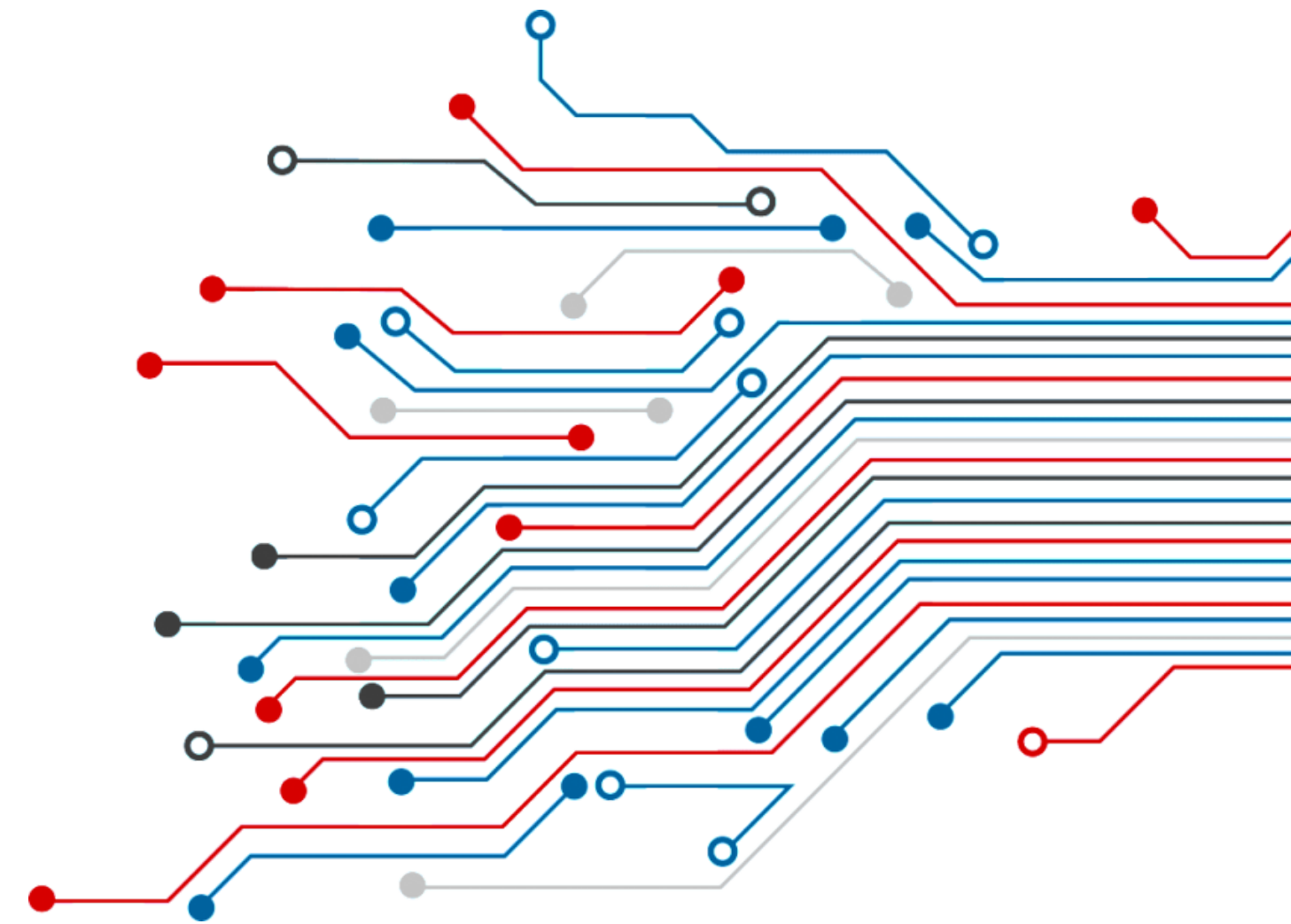
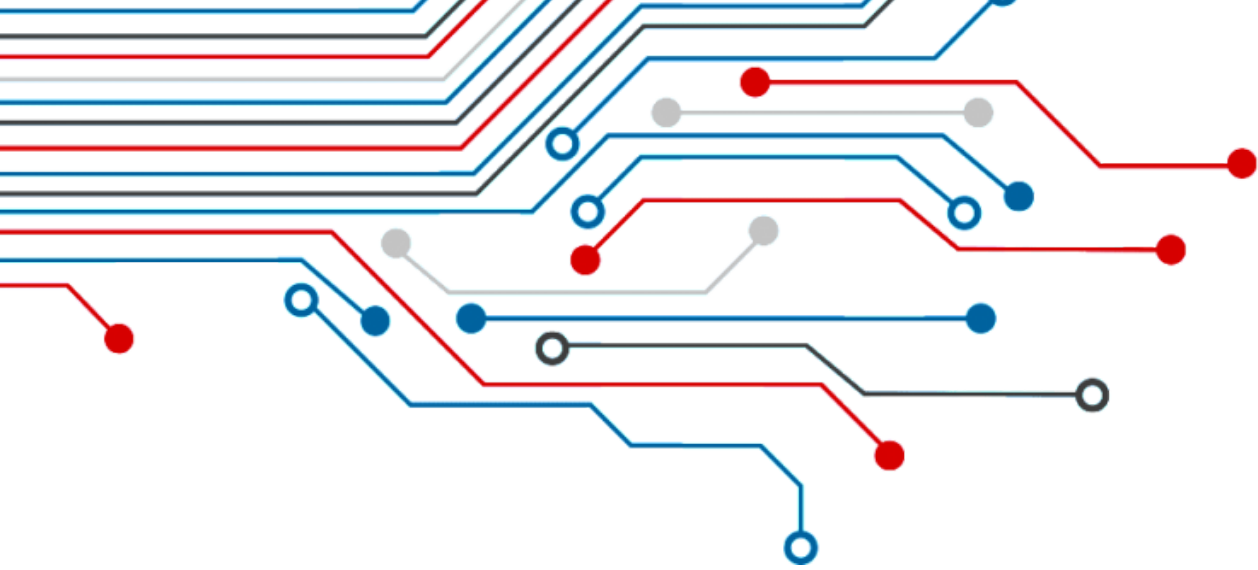


PERFECT POINT
Tailored Engineering Solutions





CEO
Shashank Saxena

Our Company

Ceo Message

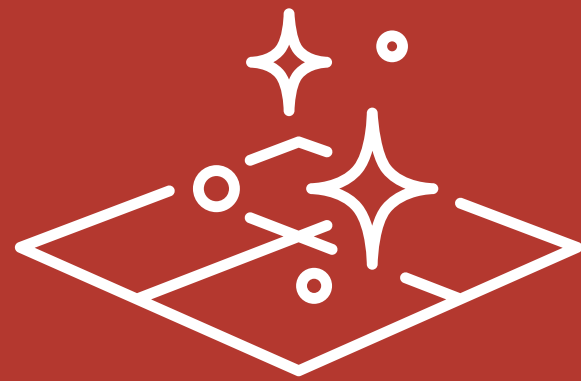
At Perfect Point, we're dedicated to excellence. Our commitment is to deliver innovative solutions, unparalleled quality, and exceptional customer service. With a focus on precision and efficiency, we empower businesses to thrive.

Shashank Saxena

Experienced in the process of Product Designing, CAD/CAM Engineering Designs, Automation and Reverse Engineering.

Since 1994

Since 2018, we have been actively contributing to the industry by providing a wide range of items and accessories, with a strong focus on delivering comprehensive surface treatment solutions.



Surface Treatment Plants

well engineered plating lines for best result.



Environment Safety

range of eco-friendly products to protect environment.



Machines & Spares

we have everything you need to keep your tools in top condition.

 Product and Service

Our Product

You'll find a diverse range of products designed to meet your needs and exceed your expectations.

Printed Circuit Boards

Plating Lines

Our PCB plating line is an advanced and highly efficient system tailored for the printed circuit board industry. It offers precision metal deposition, ensuring impeccable conductivity and quality in electronic components, making it a key asset for reliable PCB production.



Pattern Plating

Selective Metal
Deposition.

Electroless PTH

Metallic Hole
Plating.

Immersion Tin

Tin Immersion
Coating.

**Nickel/Gold
Plating**

Nickel/Gold Surface
Finish.

**Black Oxide &
Desmear Line**

Metal Surface
Treatment.

General Metal Finishers

Plating Plants

We are leading manufacturer of Rack/Barrel Plating Plants industry and our cutting-edge facilities designed to provide high-quality metal finishing services . We ensured the integrity and performance in today's demanding market.



Rack Plating Plant

Precision Metal Coating for Impeccable Surface Finishing.

Barrel & Basket Plant

Superior Metal Coating for Surface Excellence.

Semi-Auto Plating Plant

Advanced Metal Deposition for Surface Enhancement.

Manual Plating Plant

Craftsmanship in Surface Finishing with Precision Metal Coating.

General Purpose Machines

Dryers & Ovens

Our Dryers & Ovens are engineered to expedite the drying and curing processes in surface treatment applications. These precision instruments guarantee uniform heat distribution and controlled drying times, minimizing production delays.



Oven Type:	Electrical
Material Type:	MS/SS/GI
Temperature:	300
Air Flow Direction:	Dual Air/Single Air
Automation:	Manual/PLC operated
Usage/Application:	Heating/Drying
Controller:	PID

General Purpose Machines

Electrical Panels

We specialize in the creation of high-quality electrical panels, meticulously engineered for reliability and safety. Our panels adhere to stringent industry standards and are designed to enhance the operational performance of various industrial applications.



Material:	MS/SS/PP/PVC
Usage/Application:	Instrumentation Control
Automation Grade:	Manual/Automatic
Current:	As applicable
Automation Support:	Yes
Switch Gear:	L&T, Schneider, OMRON
Enclosure:	PP, SS, MS with Powder Coating

General Purpose Machines

Fume Scrubber

Our Fume Scrubber is meticulously crafted to safeguard the PCB Industry from hazardous airborne contaminants. Employing cutting-edge technology, it efficiently captures and neutralizes harmful fumes, upholding our commitment to environmental responsibility.



Material:	PP/FRP
Usage:	Chemical Industry
Operation Voltage:	440 V
Installation:	On Request/Paid
Spray Chamber:	Twin Spray System
Control Panel:	In-built
Blower Type:	Centrifugal Blower/MS FRP

General Purpose Machines

Dust Collector

Our Dust Collector exemplifies our dedication to environmentally conscious manufacturing in the PCB Industry. It ensures that airborne particulate matter is efficiently contained, promoting cleaner and healthier workspaces while aligning with our sustainability goals.



Material:	MS Powder Coated
Usage/Application:	Industrial
Efficiency:	90-95%
Air Flow:	2200-12000 m ³ /H
Power:	3-15kw
Capacity:	3HP, 5HP, 10HP, 15HP, 30HP
Shape:	Rectangular, Conical, Cylindrical

General Purpose Machines

Chemical Filters

Our Chemical Filters play a vital role in ensuring the purity and effectiveness of your plating solutions. Designed to remove impurities and contaminants, these filters contribute to superior plating quality and extend the life of your chemicals.



Material:	Polypropylene
Filter Type:	Doom type
Usage/Application:	Chemical Filtration
Driver type:	Electric 220V/440V
Filter:	Cartridges/Pad
Flow Rate:	50 LPM-500 LPM
End Connection:	Flange/Threaded/Hose
Impeller Type:	Polypropylene/PVDF



Copper Vee Block



Anode Bags



Titanium Heater



Rectifiers



Filter Cartridge

Machine and Spares

SPARES & ACCESSORIES

Explore our range of high-quality spare accessories designed to enhance the performance and longevity of your Perfect Point products. From replacement blades and cutting mats to ink refills and maintenance kits, we have everything you need to keep your tools in top condition.

Product and Service

Our Services

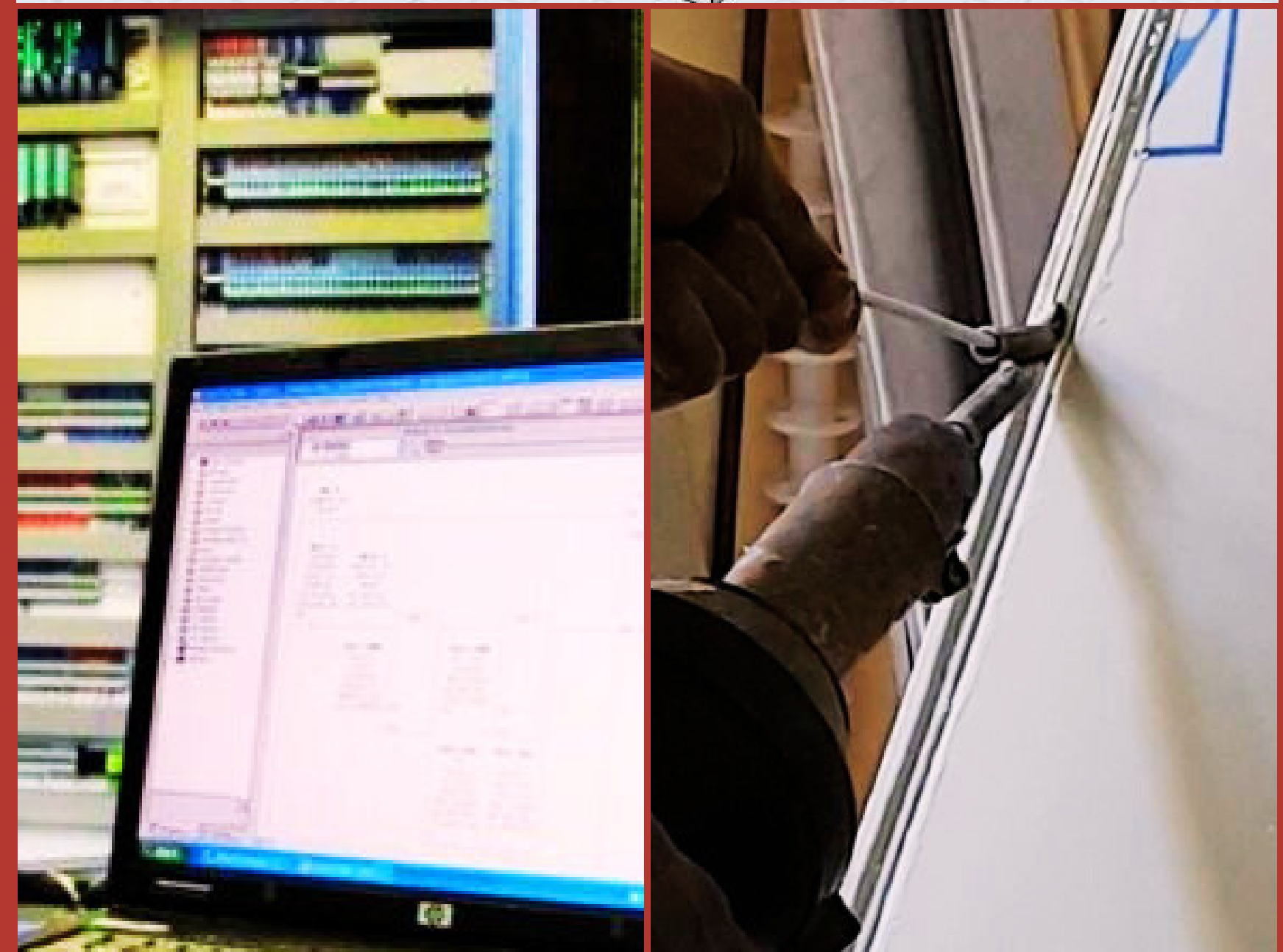
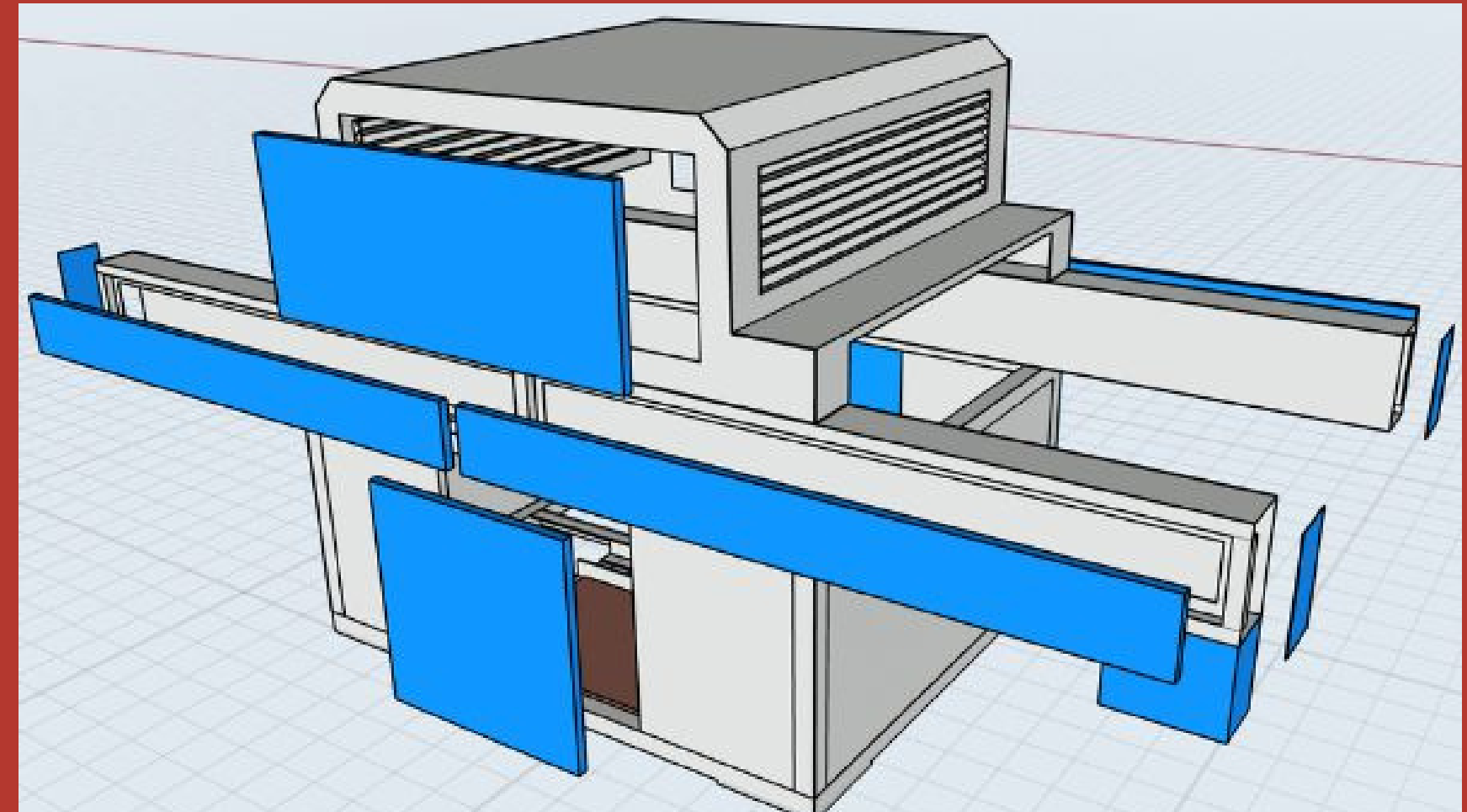
At Perfect Point, we provide end-to-end manufacturing solutions for businesses of all sizes. From prototyping to production, our expert team and cutting-edge equipment deliver top-quality products. Count on us for precision machining, surface treatment, and assembly services tailored to your unique needs.

01 Plastic Fabrication

02 Engineering Design

03 Automation Service

04 Platisole Coating



Product and Service

AMC & Maintenance

We specialize in providing comprehensive Annual Maintenance Contracts (AMC) and a wide range of maintenance services aimed at maximizing equipment reliability and operational efficiency for the benefit of our valued clients.

Revive & Optimize

Our Repair Services restore your products to like-new condition, maximizing performance and reliability. With meticulous inspections, expert repairs, and swift troubleshooting, we minimize downtime and enhance operational efficiency, ensuring your utmost satisfaction.



Before

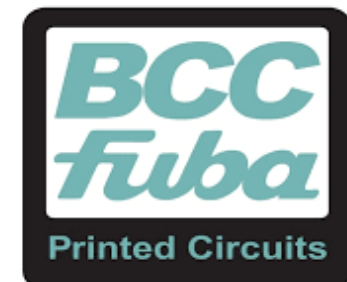


After

■ Our Valuable

Client List

We take immense pride in the strong and enduring partnerships we've cultivated over the years. Our client portfolio reflects our commitment to excellence, innovation, and unwavering dedication to delivering top-notch solutions. Explore our diverse clientele and discover how Perfect Point has contributed to their success across various industries.




■ Our Contact Details

Let's Work Together

Ready to elevate your production game? Let's talk – we're all ears.



Contact

 +91 9718 430 444

+91 8810 404 195

 sales@perfectpoint.in

 Plot No 807, 30 Feet Road, Parvatiya Colony II , NIT Faridabad 121005
Haryana, India

Website

 www.perfectpoint.in

Social Media

 @perfectpoint1994

 @perfectpoint1994